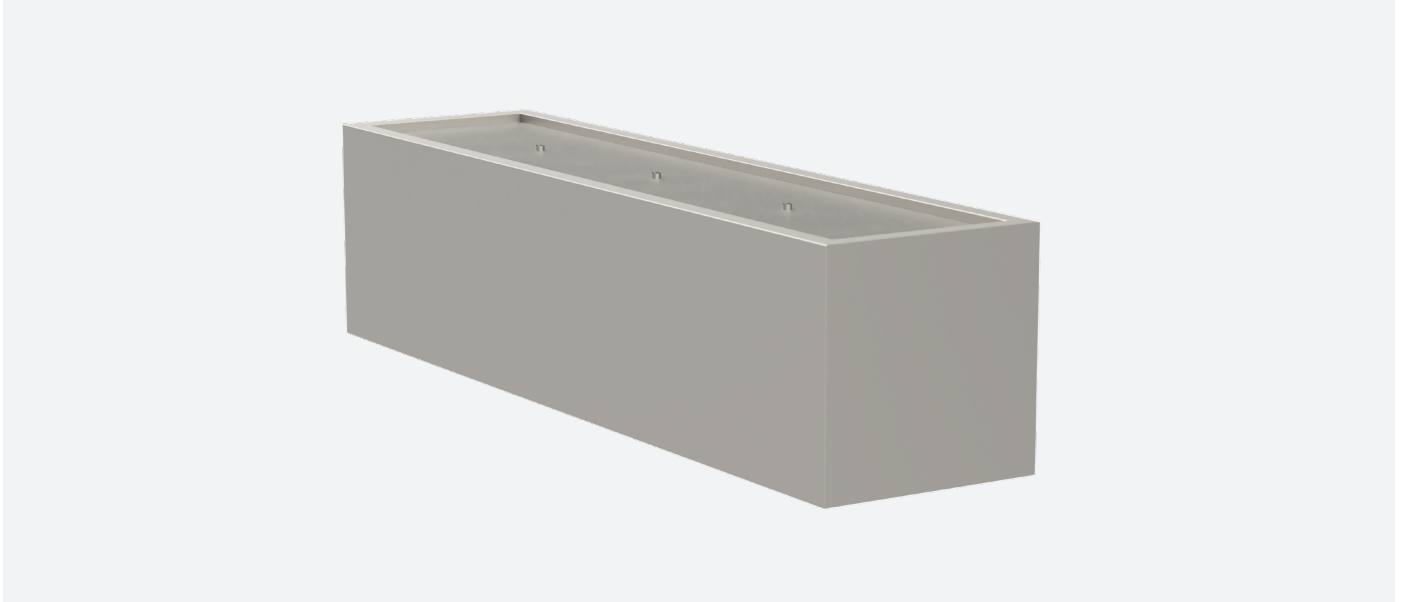


6105 192nd St. NE, #2
Arlington, WA 98223

360.502.6344
info@architerradesigns.com



DESIGN

Standard Sizes

- L60" W24" H18" Steel 190 lbs. Aluminum 68 lbs.
- L72" W24" H20" Steel 170 lbs. Aluminum 82 lbs.
- L96" W30" H22" Steel 365 lbs. Aluminum 131 lbs.
- L120" W30" H24" Steel 440 lbs. Aluminum 160 lbs.

*.125 thick

Material

- Aluminum - .125" - .250" thick Grade 5052-H32
- Corten Steel - .125" - .250" thick Grade A588/A606

Top Styles

- Straight sides
- Flange (standard)

Finishes

- Standard powder coating - Aluminum only
- RAL powder coating - Aluminum only
- Natural Rust - Steel only

FEATURES and OPTIONS

Leveling Feet with Swivel Head

- Standard 0-3" 200 lbs. cap.
- Heavy Duty 0-3" 1000 lbs. cap.
- Custom 0-5" 5000 lbs. cap.

Lighting

- Integral wall wash/step lighting
- LED face light
- Adjustable spot light

Drain Fittings

- Removable stand pipe and drain plug to clean and service water feature.

Debris Filter

- Mesh screen filter to keep out dirt and debris. Easily removable and maintained.

Autofill

- Mechanical float operated autofill
- Electronic float and valve operated autofill.

Utility sleeve

- 1" ID water tight sleeve to feed pump chord, lighting cable, etc.

Decorative Pebbles (1"-2")

- Black
- Bone/ivory
- Red

Custom Cut Design Elements

- Custom design options for adding your logo, address, or other unique design elements

Plastic Grate

- Rigid grating with standard 1" openings that can be safely covered with decorative rock. Especially useful for creating a false bottom to conceal pump and components.

Scupper Spouts

- Different styles for varying visual and sound effects.

** All joints formed or welded and ground smooth. Planters come standard with 1.25" drain holes. Custom sizing, shapes, and finishes available.*

TO SPECIFY

1. Select product, size, material
2. Select styles and finish
3. Select product-specific options

Refer to options section in catalog and specifications for standard and custom options. For questions, help specifying a product, or to place an order please contact an Architerra sales representative.

Shipping

Products are fabricated, finished, and shipped from Arlington, WA.