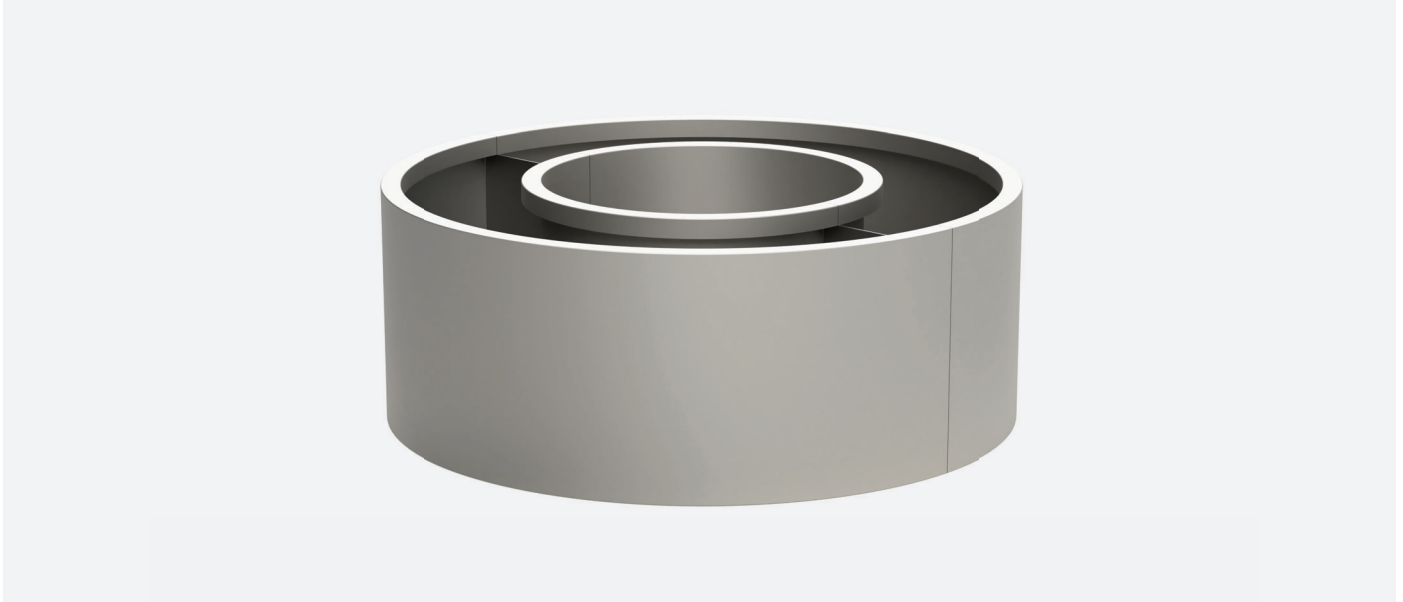


6105 192nd St. NE, #2  
Arlington, WA 98223

360.502.6344  
info@architerradesigns.com



## DESIGN

### Standard Sizes

- D24" H24" Steel 120 lbs. Aluminum 42 lbs.
- D30" H30" Steel 200 lbs. Aluminum 70 lbs.
- D40" H24" Steel 240 lbs. Aluminum 84 lbs.
- D48" H24" Steel 300 lbs. Aluminum 104 lbs.

*\*Shown as a (2) piece set. (2) planters needed for circle.*

### Material

- Aluminum - .125" thick Grade 5052-H32
- Corten Steel - .125" thick Grade A606
- Mild Steel - .125" thick Grade A36

### Base Styles

- Standard
- Inset

### Top Styles

- Straight sides
- Flange (standard)

### Finishes

- Standard powder coating - Aluminum only
- RAL powder coating - Aluminum only
- Natural Rust - Steel only

## FEATURES and OPTIONS

### Leveling Feet with Swivel Head

- Standard 0-3" 200 lbs. cap.
- Heavy Duty 0-3" 1000 lbs. cap.

### Lighting

- Integral wall wash/step lighting
- LED face light
- LED toe kick light

### Drain Fittings

- Welded fitting to divert drain runoff and avoid staining on adjacent surfaces

### Casters

- Non-marring swivel casters
- Locking swivel casters

### Drip Tray

- Custom sized tray. Built to match coating and planter profile

### Utility sleeve

- 1" ID sleeve to feed irrigation piping, electrical, speaker wire, etc.

### Irrigation Reservoir

- Integral reservoir to enable planters to be self-irrigating

### Plant Anchor Tie Off

- Integral tie off points to allow for attachment of stabilizing cables for root balls, or guy wires

### Custom Cut Design Elements

- Custom design options for adding your logo, address, or other unique design elements

### Decorative Screen

- Interior mounted mesh or decorative screen, standard size (40" taller than planter)

*\* All joints formed or welded and ground smooth. Planters come standard with 1.25" drain holes. Custom sizing, shapes, and finishes available.*

## TO SPECIFY

1. Select product, size, material
2. Select styles and finish
3. Select product-specific options

Refer to options section in catalog and specifications for standard and custom options. For questions, help specifying a product, or to place an order please contact an Architerra sales representative.

### Shipping

Products are fabricated, finished, and shipped from Arlington, WA.