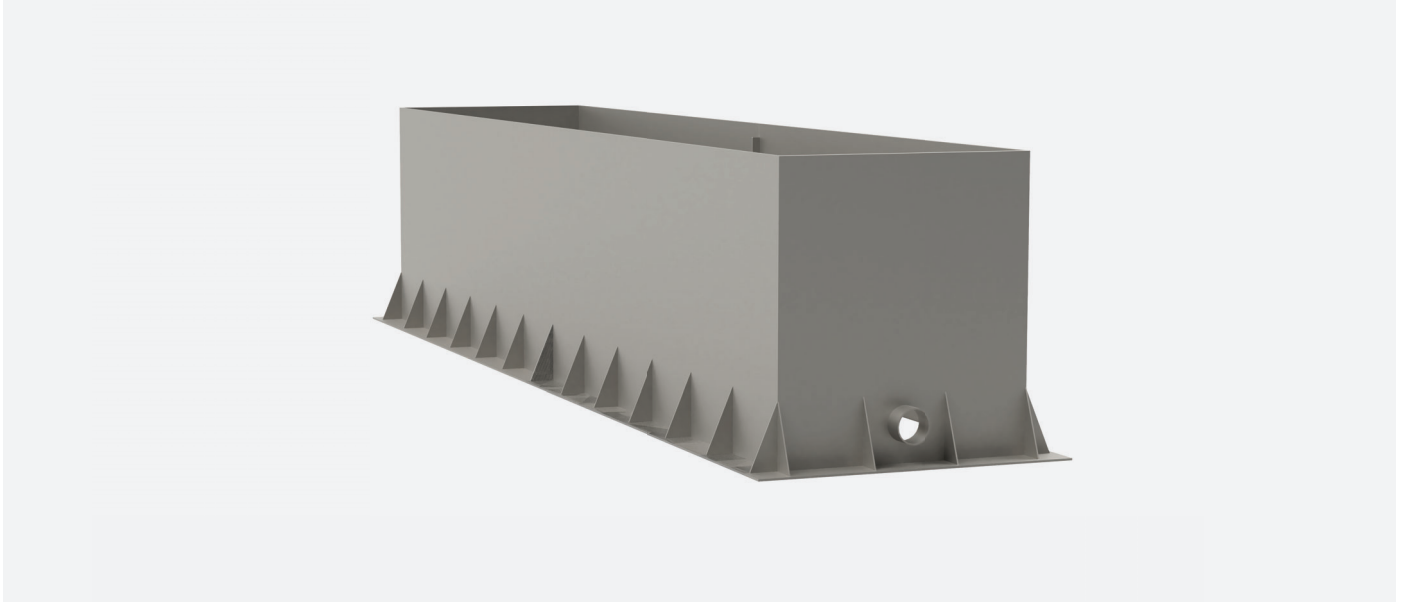


6105 192nd St. NE, #2  
Arlington, WA 98223

360.502.6344  
[info@architerradesigns.com](mailto:info@architerradesigns.com)



## DESIGN

### Select Standard Sizes

- L72" W24" H48" Steel 905 lbs Aluminum 318 lbs
- L120" W24" H48" Steel 1,418 lbs Aluminum 514 lbs
- L72" W36" H48" Steel 1,143 lbs Aluminum 413 lbs
- L96" W36" H48" Steel 1,460 lbs Aluminum 682 lbs
- L120" W48" H48" Steel 1,850 lbs Aluminum 656 lbs
- L144" W72" H48" Steel 2,701 lbs Aluminum 998 lbs

\*.250 thick plate used for listed weights  
Internal dimensions listed

### Material

- Aluminum - .125" - .375"+ thick Grade 5052-H32
- Corten Steel - .125" - .375"+ thick Grade A588/A606

### Placement

- On Grade

### Top Styles

- Straight sides
- Flange (standard)

### Finishes

- Standard powder coating - Aluminum only
- RAL powder coating - Aluminum only
- Natural Rust - Steel only

## FUNCTION

### Modular Component package

- Fasteners, Neoprene gasket, and bracing (on large planters)

### Drain Port Gasket

- 4" SCH 40 pipe removable gasket (std.)
- 6" SCH 40 pipe removable gasket

### Drainage Components

- 4" SCH 40 perforated under drain, dwv fittings, overflow, and accessories
- 6" SCH 40 perforated under drain, dwv fittings, overflow, and accessories

### Splash Block

- 12x12" open-bottomed box to contain rock
- Custom option

### Weir/Overflow

- Notched weir on side of planter wall
- Adjustable weir
- Atrium Grate
- Flow control orifice on pipe discharge

### Level Spreader

- Modular dispersion device in sections W4"x H4" lengths 2',4',6',8'
- Custom shape and length

### Runnel

- Decorative channel to convey water over longer distances

### Scupper/Spout

- Variety of styles for different design effects and functional uses

### Geosynthetic Fabrics

- Geosynthetic fabric for drainage and coating protection

### Custom Options

- Custom options for site specific design and functional challenges

### Media

- Biofiltration Media, Aggregate, and mulch available in bulk

*\*Standard planter includes basin and drain port. All joints formed or welded and ground smooth. Custom sizing, shapes, and finishes available.*

**FEATURES and OPTIONS**
**Lighting**

- Integral wall wash/step lighting
- LED face light
- LED toe kick light

**Irrigation/Conduit Port**

- 1" - 4" diameter pipe gasket for irrigation, conduit, or other utility

**Plant Anchor Tie Off**

- Integral tie off points to allow for attachment of stabilizing cables for root balls, or guy wires

**Custom Design Elements**

- Custom design options for adding your logo, address, or other unique design elements

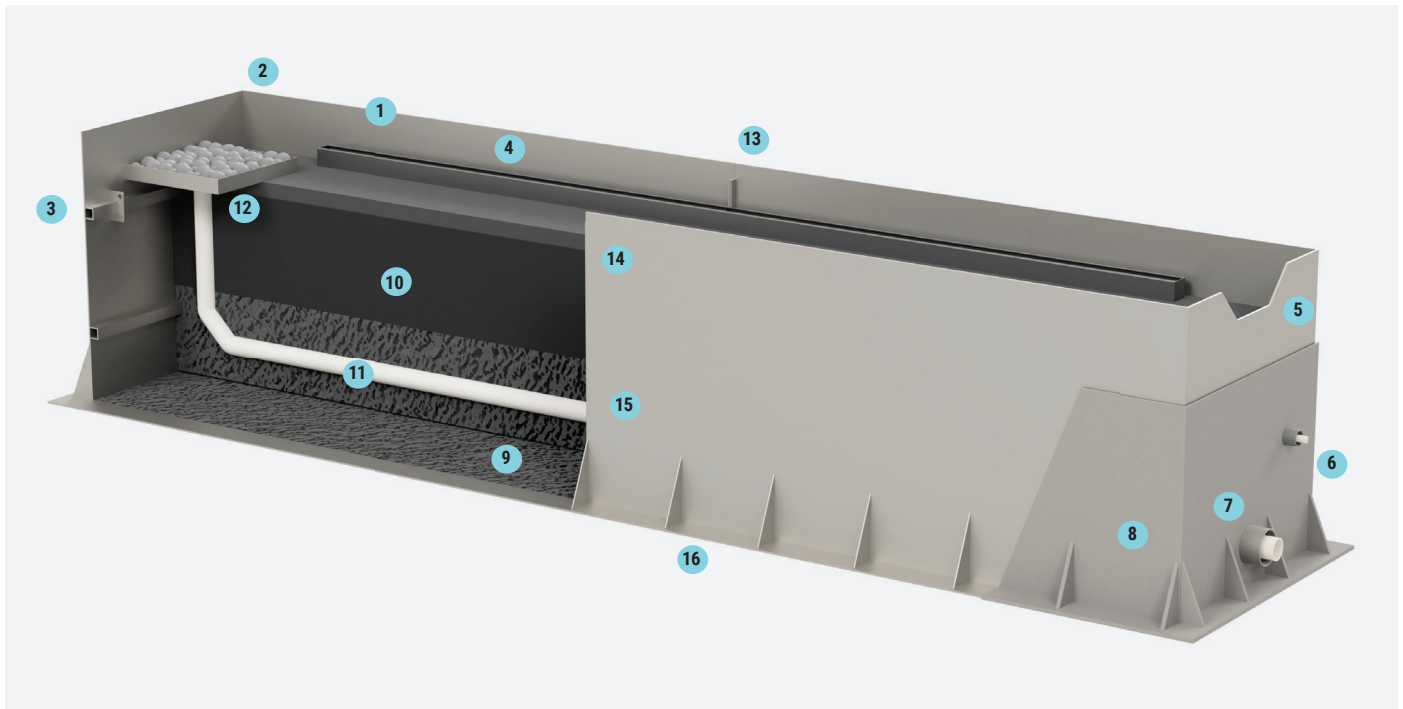
**TO SPECIFY**

1. Select product, size, material
2. Select product placement, styles and finish
3. Select product-specific options

Refer to options section in catalog and specifications for standard and custom options. For questions, help specifying a product, or to place an order please contact an Architerra sales representative

**Shipping**

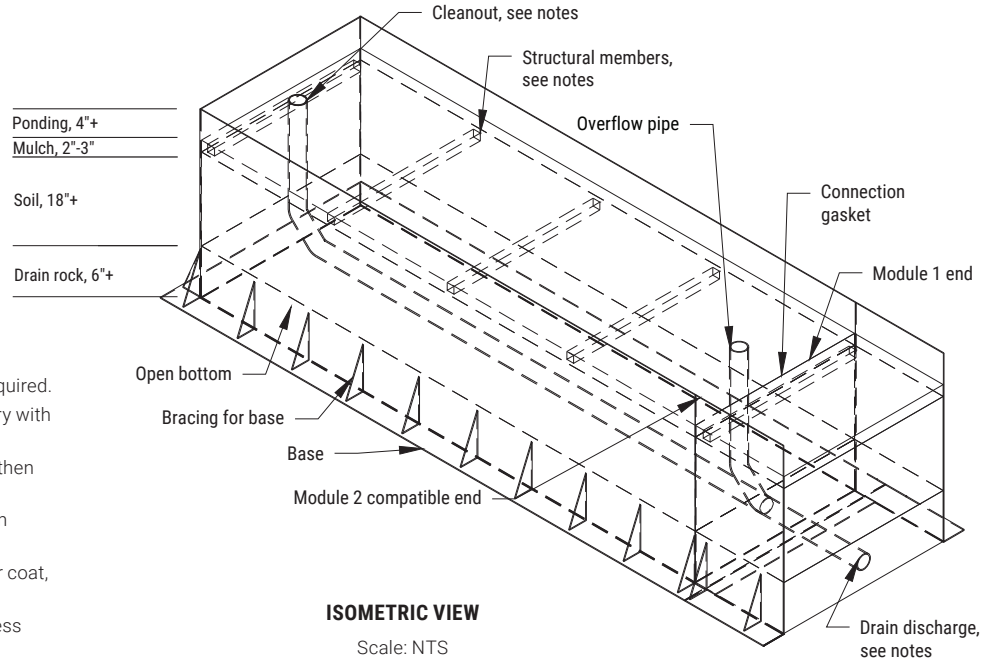
Recuro planters ship empty. Components ship loose. Media ships in super sacks. Products are fabricated, finished, and shipped from Arlington, WA.


**Components**

- |                                                                                                                                                                                                                                                                                                                                                                                                                                                                                                                                                                            |                                                                                                                                                                                                                                                                                                                                                                                                                                                                                                                              |
|----------------------------------------------------------------------------------------------------------------------------------------------------------------------------------------------------------------------------------------------------------------------------------------------------------------------------------------------------------------------------------------------------------------------------------------------------------------------------------------------------------------------------------------------------------------------------|------------------------------------------------------------------------------------------------------------------------------------------------------------------------------------------------------------------------------------------------------------------------------------------------------------------------------------------------------------------------------------------------------------------------------------------------------------------------------------------------------------------------------|
| <ol style="list-style-type: none"> <li>1. Powder coated aluminum or weathering steel .125"-.375"+ thick</li> <li>2. All joints formed or welded and ground smooth</li> <li>3. Structural bracing as necessary</li> <li>4. Level spreader for larger discharge areas</li> <li>5. Overflow weir for larger discharge areas</li> <li>6. Irrigation or conduit ports with removable watertight gasket</li> <li>7. Drain discharge port with removable watertight gasket. Std. 4"+ diameter pipe</li> <li>8. Geosynthetic fabric for drainage and coating protection</li> </ol> | <ol style="list-style-type: none"> <li>9. Open bottom for infiltration</li> <li>10. Mulch, biofiltration soil, and aggregate</li> <li>11. Slotted/perforated under drain and components</li> <li>12. Splash block, or optional pre-settling device/catch basin</li> <li>13. Watertight gasket with connection hardware</li> <li>14. Standard sizes up to L12' x W 8' and custom sizes up to L20' x W8'</li> <li>15. Standard heights 3'- 5'+</li> <li>16. Can be set on compacted gravel base or concrete footing</li> </ol> |
|----------------------------------------------------------------------------------------------------------------------------------------------------------------------------------------------------------------------------------------------------------------------------------------------------------------------------------------------------------------------------------------------------------------------------------------------------------------------------------------------------------------------------------------------------------------------------|------------------------------------------------------------------------------------------------------------------------------------------------------------------------------------------------------------------------------------------------------------------------------------------------------------------------------------------------------------------------------------------------------------------------------------------------------------------------------------------------------------------------------|

**Notes:**

- Engineering services available for structural or civil needs
- Available in infiltrating or non infiltrating models
- Available as individual cells or as complete packages for turnkey installation
- Can be set below grade and built to withstand potential point loads from adjacent infrastructure



**Notes**

1. Drainage outlet: Size and location as required.
2. Irrigation/conduit port: Size and location as required.
3. Treatment flow rate and maximum weights vary with size.
4. Structural members used as needed to strengthen walls. All members located below mulch level.
5. Clean out located at end of drain line. Shown in location for visual purposes
6. All standard coatings are with low VOC powder coat, and elastomeric waterproofing
7. Modules connected with rubber gasket, stainless fasteners, and bracing as needed
8. Custom sizes, coatings and configurations available.

