

6105 192nd St. NE, #2
Arlington, WA 98223

360.502.6344
info@architerradesigns.com



DESIGN

Standard Heights

- Low - 6", 8", 10", 12"
.190"-.250" thick material
- Mid - 16", 20", 24", 30"
.190"-.375" thick material
- Tall - 36", 40", 44", 48"
.250"-.375" thick material

Standard Lengths

- Middle sections 4', 6', 8', 10'
- Corners in each direction 2', 4', 6', 8'

Material

- Aluminum - .190" - .375" thick Grade 5052-H32
- Corten Steel - .125" - .375" thick Grade A606
- Mild Steel - .125" - .375" thick Grade A36

Shape

- Straight
- Angled
- Curved

Functional Styles

- Freestanding (up to 36" Height)
- Freestanding with tieback (up to 48"+ Height)
- Can be mounted to structures for added rigidity

Top Styles

- Straight sides (standard)
- Flange

Connection Styles

- Fitted joints
- Visible connecting bolts
- Connecting lip

Finishes

- Standard powder coating - Aluminum only
- RAL powder coating - Aluminum only
- Natural Rust - Steel only

FEATURES and OPTIONS

Leveling Feet with Swivel Head

- Standard 0-6" 5000 lbs. capacity

Lighting

- Integral wall wash/step lighting
- LED face light
- LED toe kick light

Structural Bracing

- Installable anchors to secure planter or wall module to a building or structure

Guardrail Rating

- Structural bracing and mounts to enable your planter or wall modules to meet code requirements for use as a guardrail

Cladding

- Thermally modified wood
- Reclaimed wood

Site furnishing mount

- Mounting brackets to add seating elements, light posts, counters, etc. to your planter wall module

Utility sleeve

- 1" ID sleeve to feed irrigation piping, electrical, speaker wire, etc.

FEATURES and OPTIONS
Irrigation Reservoir

- Integral reservoir to enable planters to be self-irrigating

Plant Anchor Tie Off

- Integral tie off points to allow for attachment of stabilizing cables for root balls, or guy wires

Custom Cut Design Elements

- Custom design options for adding your logo, address, or other unique design elements

Decorative Screen

- Interior mounted mesh or decorative screen, standard size (40" taller than planter)

** All joints formed or welded and ground smooth. Custom sizing, shapes, and finishes available.*

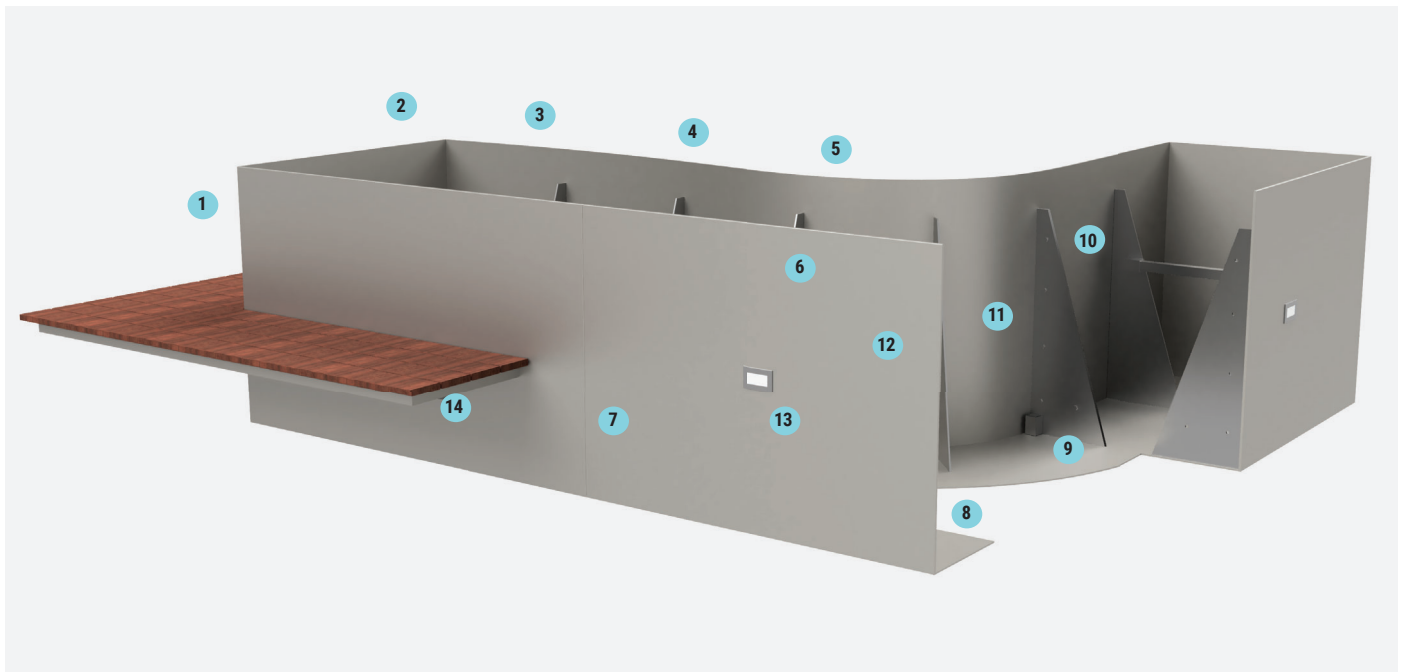
TO SPECIFY

1. Select product, size, material
2. Select styles and finish
3. Select product-specific options

Refer to options section in catalog and specifications for standard and custom options. For questions, help specifying a product, or to place an order please contact an Architerra sales representative.

Shipping

Products are fabricated, finished, and shipped from Arlington, WA.


Components

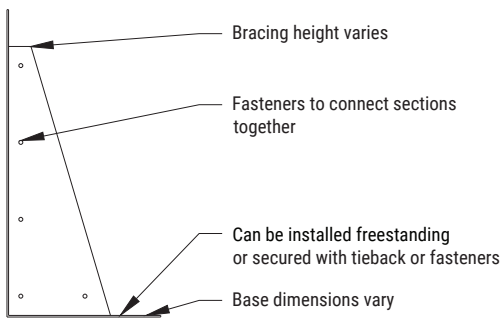
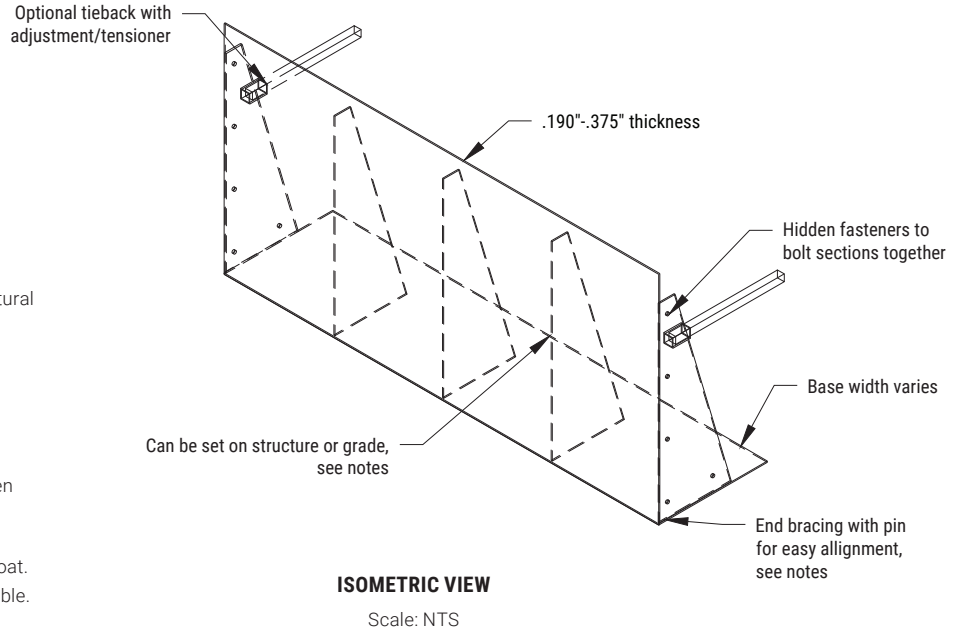
1. Powder coated aluminum, mild or weathering steel .125"-.375"+ thick
2. All joints formed or welded and ground smooth
3. Standard lengths 4', 6', 8', 10', and custom lengths up to 20'
4. Available in straight, angled, or curved shapes
5. Freestanding up to 36" (style dependent) and with tiebacks up to 48"+ height
6. Top available in straight sides or with flange
7. Joints available in fitted, offset spacing with visible connecting bolts, and connecting lip
8. Leveling feet
9. Structural bracing to secure wall and to meet guardrail rating as required
10. Adjustable tiebacks for simple field adjustments.
11. Sections easily align and bolt together with mating flange.
12. Wood cladding and custom cut design available
13. Integral wall washes, step lights, or hidden strip lighting available
14. Mounting brackets to add seating elements, light posts, counters, etc. to wall module

Notes:

- Engineering services available for structural or civil needs
- Can be set on grade, on structure, geo foam, pavers, or paved surface
- Many scenarios do not require mounting to structure
- High performance low voc coatings available

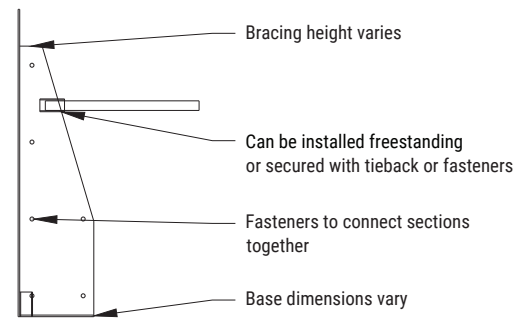
Notes

1. Adjustable tiebacks and posts available for structural rigidity with structure and grade models
2. Shorter models available as freestanding or with mounting bolts
3. Taller models require tiebacks and/or additional support
4. All hardware supplied by manufacturer.
5. Structural members used as needed to strengthen walls. All members located below mulch level.
6. Drainage on backside suggested.
7. All standard coatings are with low VOC powder coat.
8. Custom sizes, coatings and configurations available.



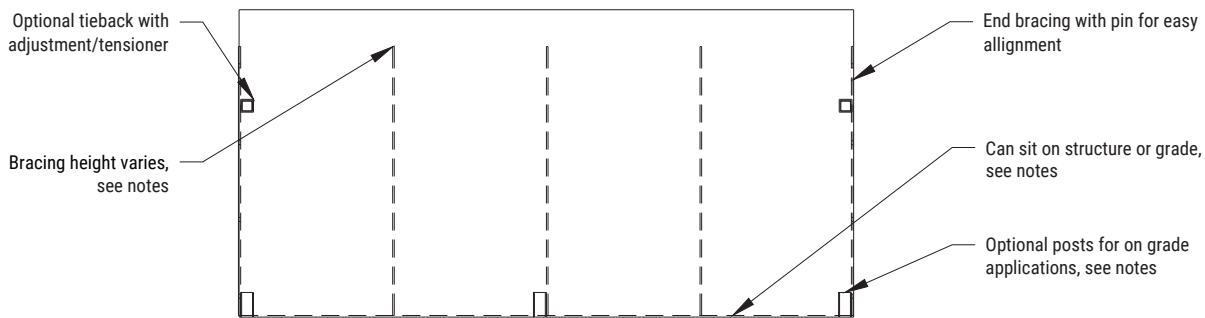
ON STRUCTURE STYLE

Scale: NTS



ON GRADE STYLE

Scale: NTS



ELEVATION

Scale: NTS